

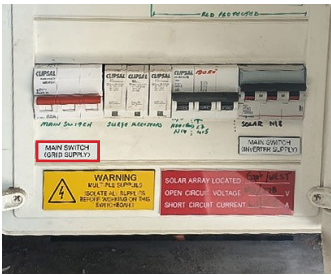


Habitat Air & Solar

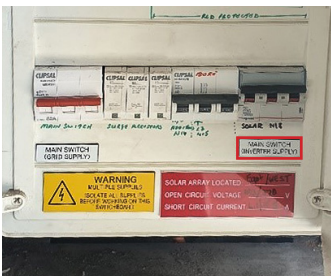
Solar PV Isolation Procedure

When entering the roof space of a home with Solar Panels, the system must be isolated using the following steps.

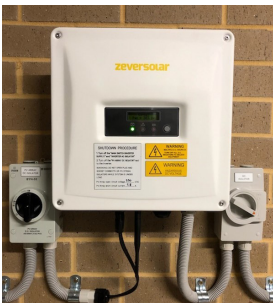
1. Turn off the **Grid Supply** main switch in the meter box.



2. Turn off the main switch **Inverter Supply** in the meter box.



3. General Inverter Installation Layout.



4. Turn off inverter **AC Isolator**



5. Turn off the **PV Array DC Isolator** next to the inverter (Note: Some inverters have the DC isolator incorporated in the inverter).



6. The **PV Array System** wiring in the roof space is shielded in conduit allowing safe access into the roof space.



7. If undertaking any construction type work in the roof space near the PV array wiring that could cause damage, you **MUST** turn off all **PV Array DC Isolators** located on the roof at the panels.



To re-energise, follow the above steps in reverse. Steps 7 - 1.